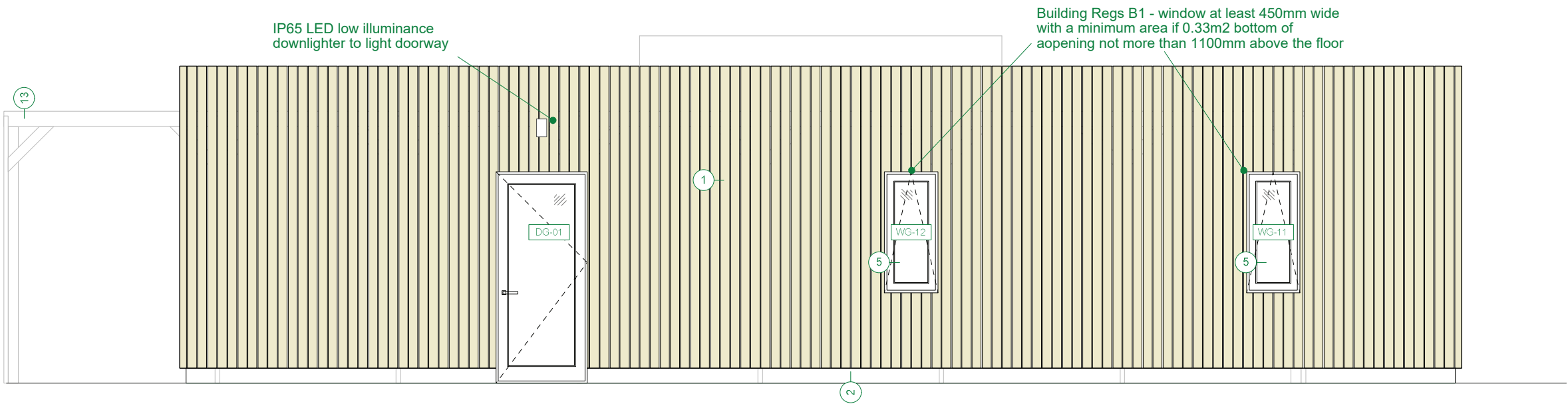
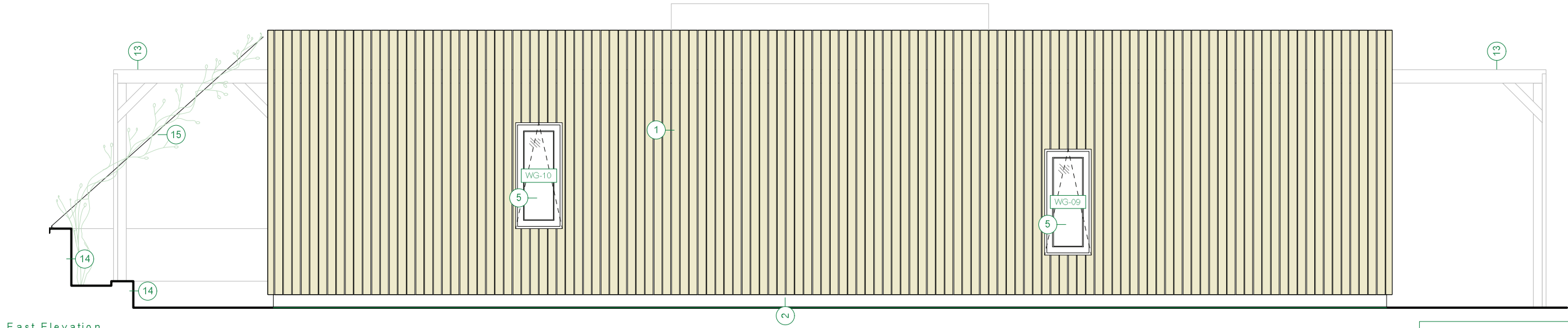


- Key
- 1 UK Sourced western red cedar cladding
 - 2 Medite Tricoya Extreme painted to Medite's specification
 - 3 -
 - 4 fixed triple glazed window
 - 5 openable top hung triple glazed window
 - 6 electric fireplace
 - 7 hopper and downpipe
 - 8 100L Wall mounted water butt
 - 9 sedum green roof
 - 10 gravel drain
 - 11 non-slip timber decking
 - 12 recycled gravel/shingle driveway
 - 13 UK sourced timber trellising for solar shading and climbing plants
 - 14 reclaimed sleeper stepped retaining planter wall, planted with climbers (see landscaping drawing)
 - 15 stainless steel cables for climbers
 - 16 new post and rail fence to connect to existing
 - 17 bin store
 - 18 parking bay with one accessible and one standard bay
 - 19 land drain to soakaway
 - 20 Vortex 4 0.55 treatment plant to soakaway - control panel on post
 - 21 Solar PV array for electricity generation



North Elevation



East Elevation

FOR PLANNING

Studio Bark

Environmental Design

www.studiobark.co.uk

info@studiobark.co.uk

Key	
1	UK Sourced western red cedar cladding
2	Medite Tricoya Extreme painted to Medite's specification
3	-
4	fixed triple glazed window
5	openable top hung triple glazed window
6	electric fireplace
7	hopper and downpipe
8	100L Wall mounted water butt
9	sedum green roof
10	gravel drain
11	non-slip timber decking
12	recycled gravel/shingle driveway
13	UK sourced timber trellising for solar shading and climbing plants
14	reclaimed sleeper stepped retaining planter wall, planted with climbers (see landscaping drawing)
15	stainless steel cables for climbers
16	new post and rail fence to connect to existing
17	bin store
18	parking bay with one accessible and one standard bay
19	land drain to soakaway
20	Vortex 4 0.55 treatment plant to soakaway - control panel on post
21	Solar PV array for electricity generation

Rev	Date	Description	Drwn	Chkd
A	21/10/20	Issue to Suppliers	WM	SC
E	29/11/20	Updates to schedules	WM	SC
F	09/12/20	Issued to planning for discharge/variation of conditions	WM	SC

Rev	Date	Description	Drwn	Chkd

- Do not scale from this drawing. Use figured dimensions only.
- All dimensions to be checked on site before construction proceeds and prior to the fabrication of any component.
- Any discrepancies shall be brought to the attention of Studio Bark for resolution before construction commences.
- Structural and services information shown is indicative only. Refer to consultants' drawings for details and setting out.
- All work and materials to be in accordance with current applicable statutory legislation and to comply with all relevant codes of practice and British and European standards.
- Studio Bark owns the copyright of these drawings which must not be reproduced in whole or part without the written permission of Studio Bark.

A163 - Nest House

North and East Elevations					
Drawn	Checked	Date	Scale	Job Ref	Drawing Number
WM	SC	OCT 20	1:50@A3	A163	2102