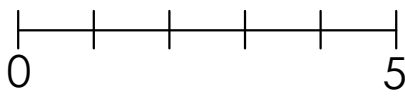


This drawing will be to scale when printed at 100%  
on A2 paper, the line should measure 5 cm long



Expressed steel structure  
Polyester powder coated  
Anthracite grey RAL 7016

Form contiguous  
sarnafil gutter with  
wall finishes.

Existing roof finish

Glass rooflight slot  
linking new and old  
structures

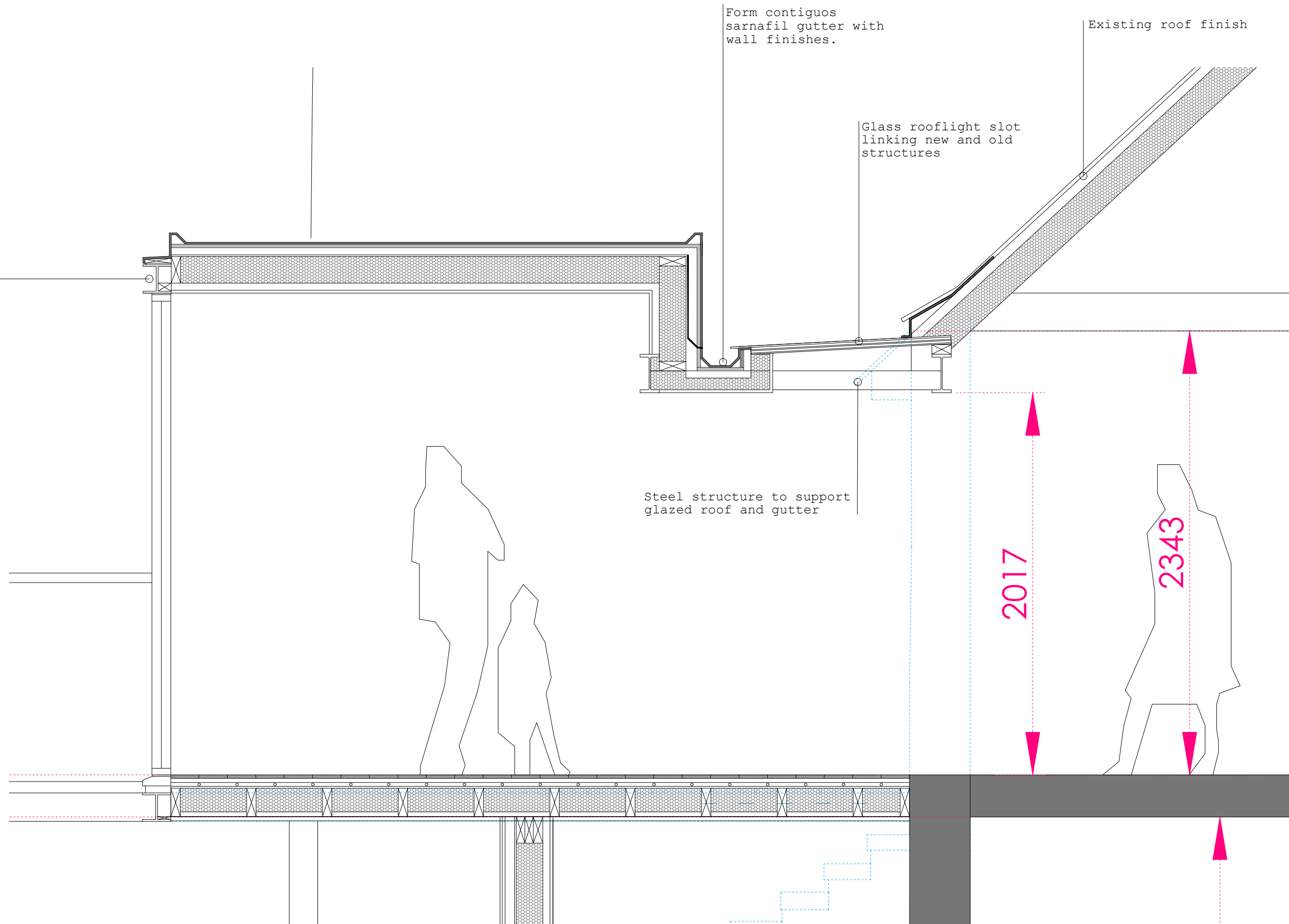
Steel structure to support  
glazed roof and gutter

#### Roof: Extra Note

When setting out steel against  
timber frame. Set joists 45mm above  
steel to allow for rigid insulation  
infill above steel. | Cold bridging

#### Roof

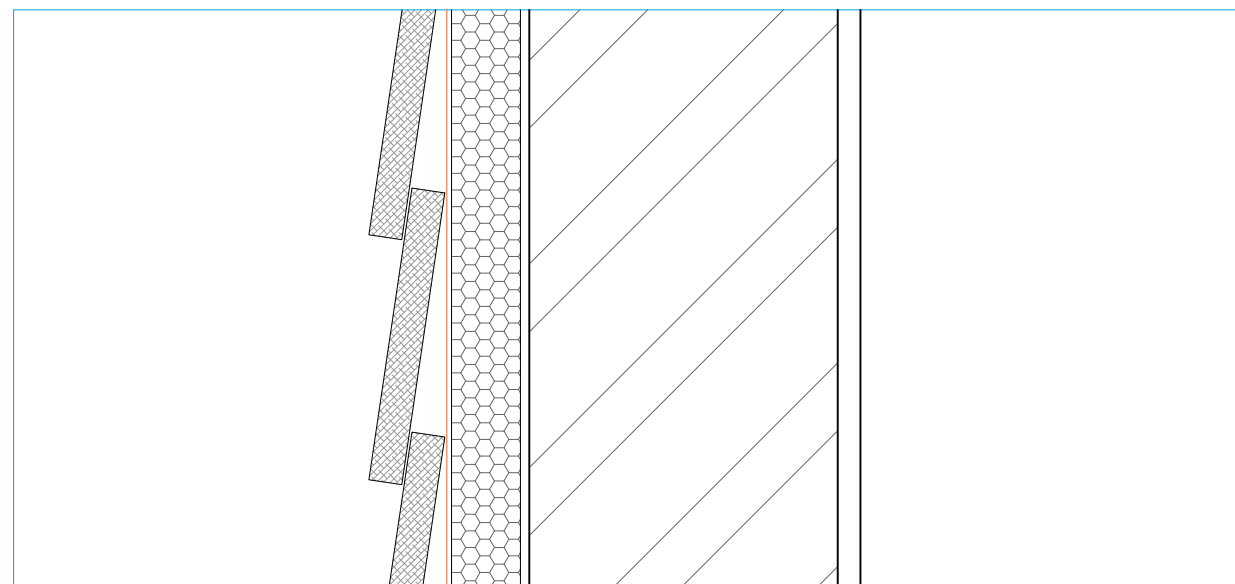
Sarnafil on.  
18mm Marine ply on  
50x50 tanalised counter battens on  
150mm Timber frame infilled.  
150mm Quinnterm rigid insulationon.  
VCL on  
38x38mm service void on.  
Plasterboard and skim finish



1:20  
Section AA

#### Cladding to existing building

Western red Cedar Cladding on black  
breather paper on 50x50 treated  
timber timbers at 600 ctrs in-filled  
with wood wool board insulation on  
existing brickwork



1:5  
Cladding

