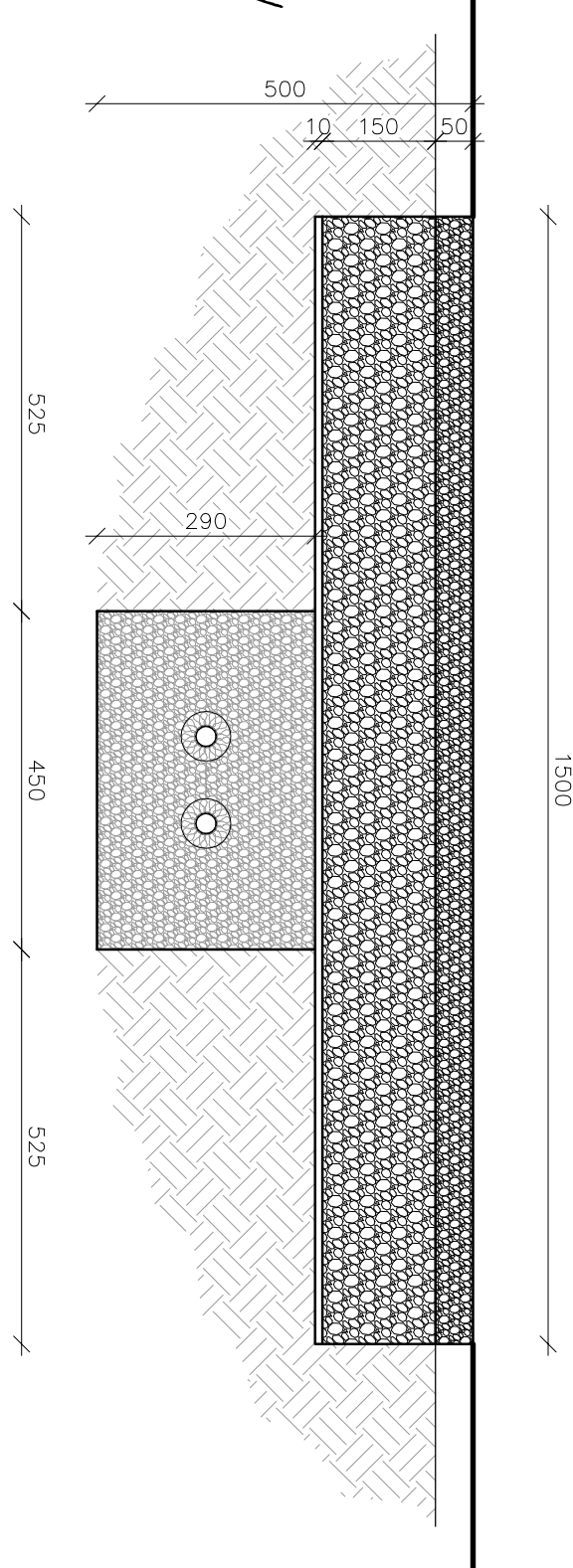


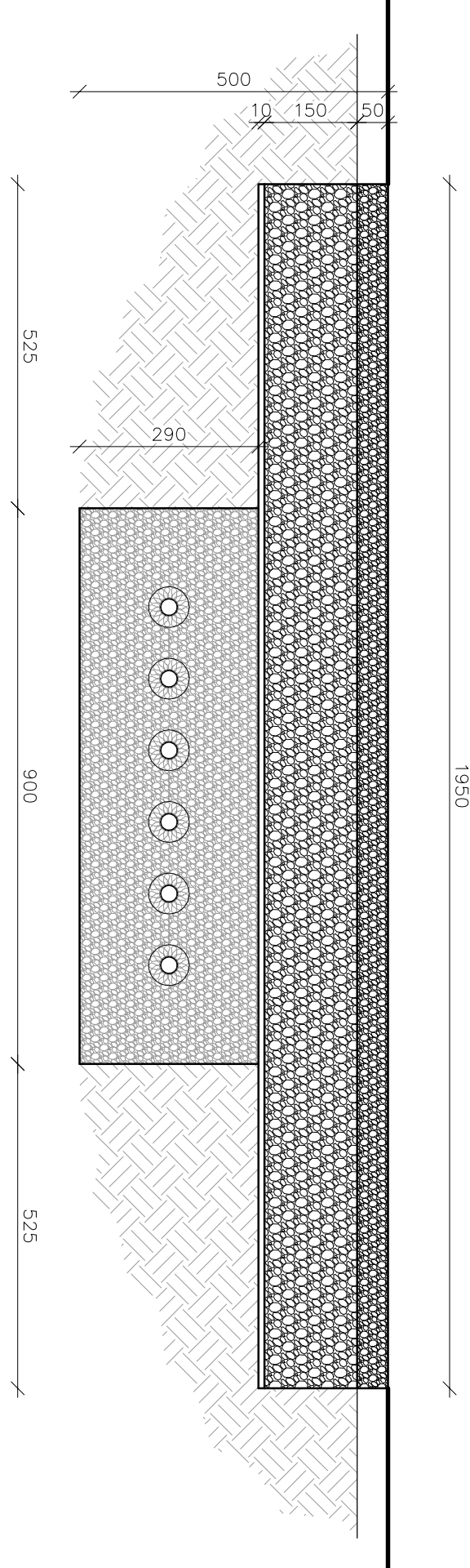
## Gravel (single)

- 50mm gravel (20mm)
- 150mm DT Type 1 sub-base
- 10mm rot-proof road plate
- 290mm pea gravel bedding / surround / cover to pipes



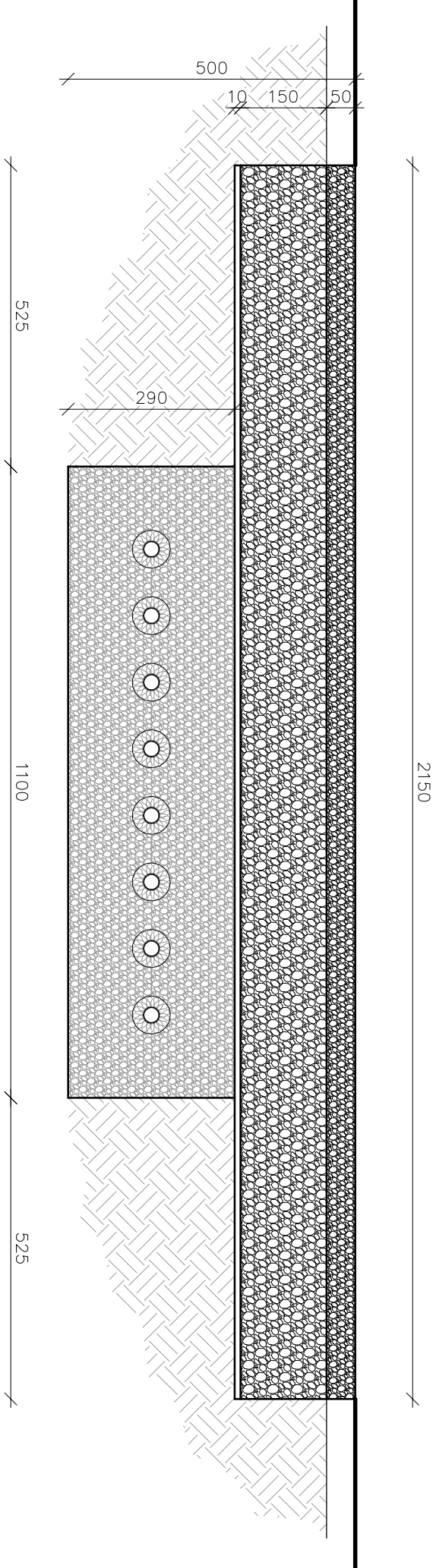
## Gravel (triple)

Scale bar	
0.1m @ 1:5	
0.4m @ 1:20	
1.0m @ 1:50	
2.0m @ 1:100	
4.0m @ 1:200	
10.0m @ 1:500	
25.0m @ 1:1250	



10mm rot-proof road plates to be laid perpendicular to trench lines, with min. 500mm bearing onto undisturbed ground to either side of main duct trench. Drill holes in corners to each plate and use U-shaped galvanised staples driven into ground below to tie adjacent plates together.

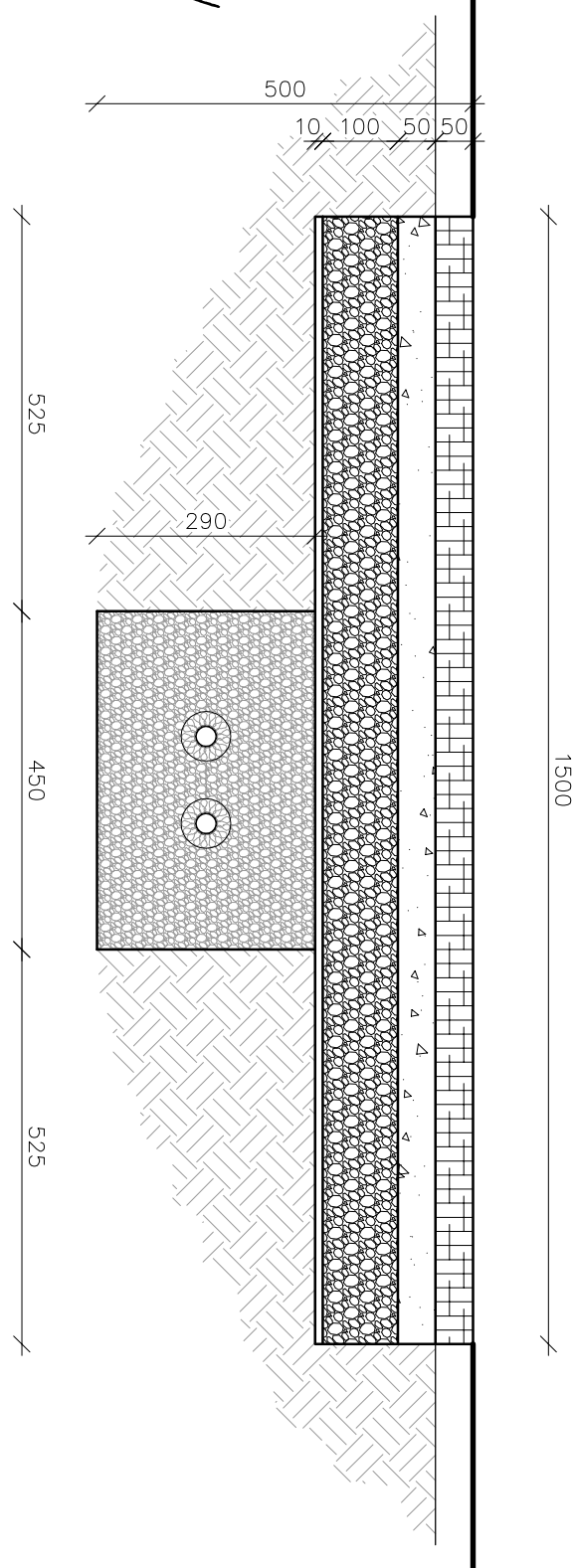
## Gravel (quad)



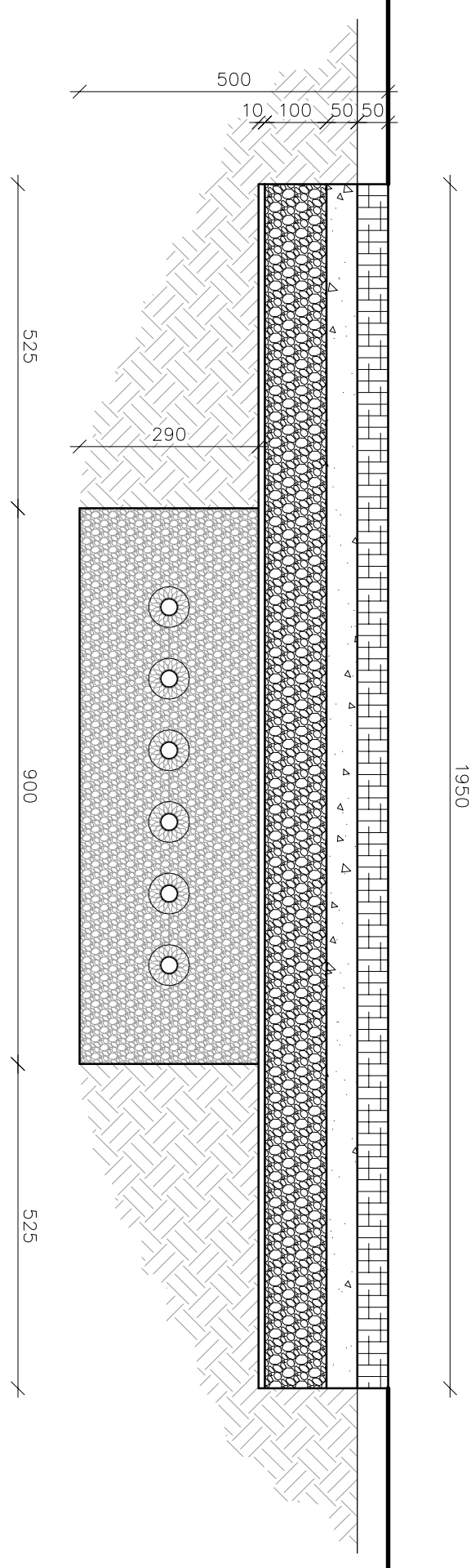
## Stone setts (single)

Depth of existing stone setts assumed at 50mm. Amend overall depth to suit, if setts are deeper. Existing setts to be carefully lifted and cleaned for re-use where possible, or replaced like-for-like.

- 50mm (nom.) stone setts
- 50mm laying course
- 100mm DT Type 1 sub-base
- 10mm rot-proof road plate
- 290mm pea gravel bedding / surround / cover to pipes

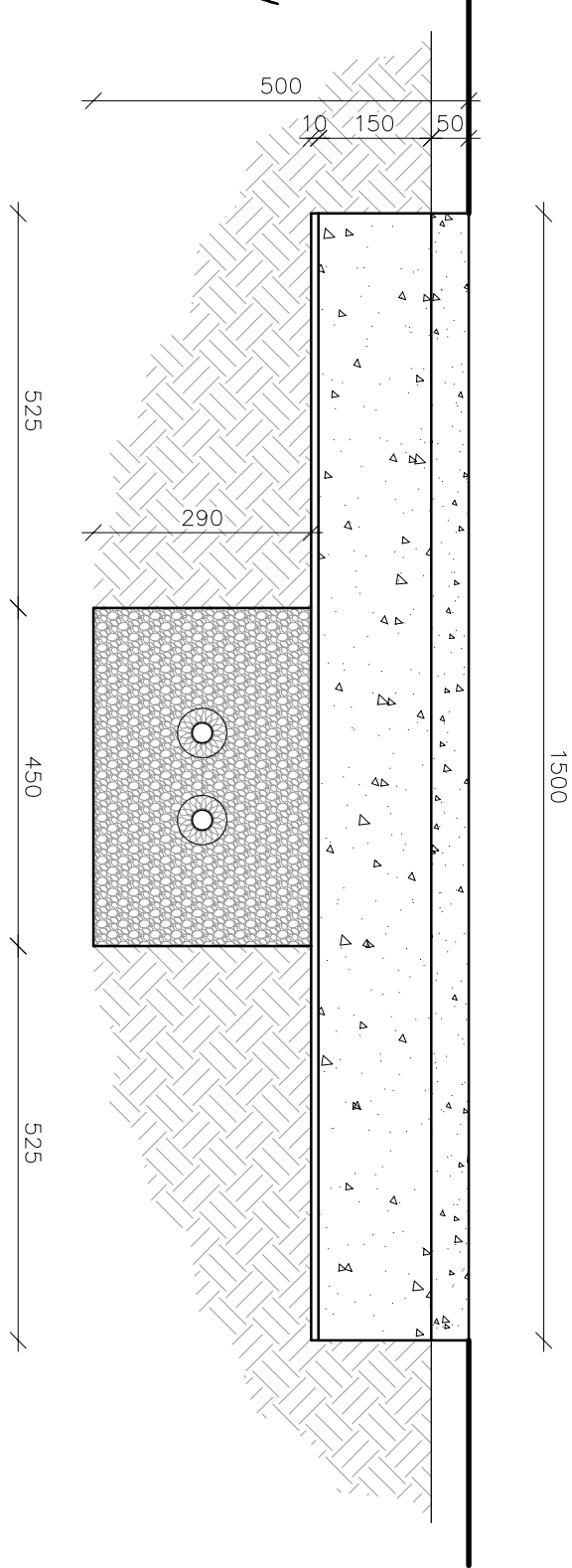


## Stone setts (triple)



## Tarmac (single)

- 50mm wearing course
- 150mm base course
- 10mm rot-proof road plate
- 290mm pea gravel bedding / surround / cover to pipes



## Grass (single)

- 25mm turf
- 175mm clean soil
- 10mm rot-proof road plate
- 290mm pea gravel bedding / surround / cover to pipes

